

## Arrangements for the Formula One British Grand Prix 2019

### Turweston Aerodrome 4x4 Transfer to Silverstone Circuit 12th to 14th July 2019

#### The Service

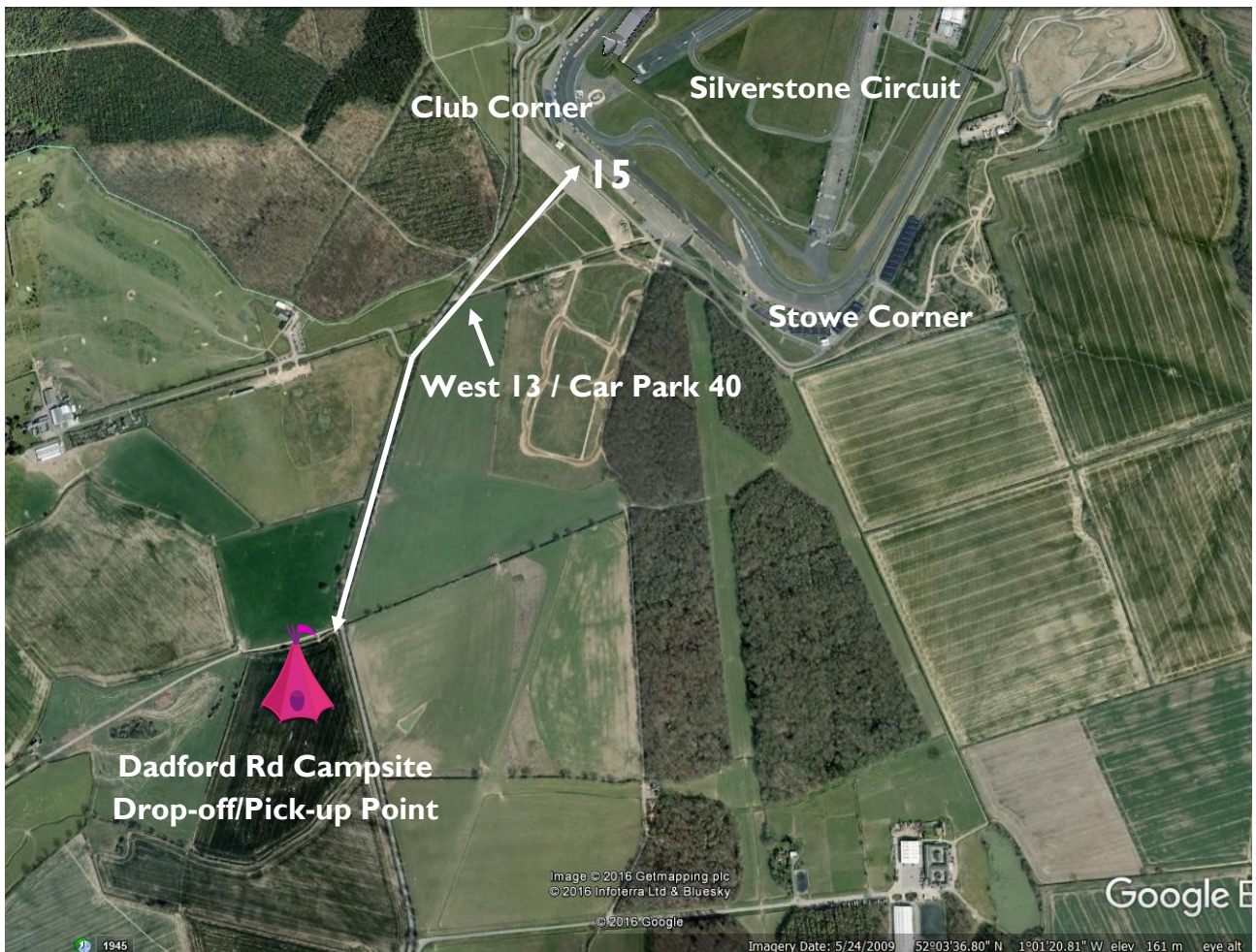
Cross-country transfer service between Turweston Aerodrome and the Dadford Road Campsite close to Silverstone Circuit. We use a fleet of 4x4 vehicles to transport guests between the sites.

#### The Journey

The journey between Turweston Aerodrome and Dadford Road Campsite takes approximately 15 minutes and is mostly off-road.

#### Drop-Off and Pick-Up Point

Our drop-off and pick-up point is just inside the pedestrian entrance to Dadford Road Campsite (see tent), approximately 800 metres from pedestrian entrance 15 in car park 40. Circuit entry and exit is through gate 15.





## **Turweston Aerodrome 4x4 Shuttle Service to Silverstone Circuit Friday 12th to Sunday 14th July 2019**

### **Price**

£120 plus VAT per person. This is for a return journey.

### **Shuttle Hours**

**Friday** 9am to 6pm, **Saturday** 8am to 6pm

(depart Turweston on a first-come, first-served basis , scheduled collection\* from Circuit)

\*subject to availability

**Sunday** 8am to 7pm

(departures and returns on a first-come, first-served basis throughout the day)

### **Arriving by Air**

Operators bringing passengers to Turweston must pre-book a landing slot and passenger places on the shuttle. Passenger handling will be provided for all arrivals and departures unless the Operator advises differently.

### **Arriving by Road**

Head for the 4-storey brick and glass building (Turweston Tower) and follow signs / marshals for parking. .The shuttle departure and return point is at the Tower car park. **DO NOT** follow the signs for Park & Ride—this is a bus service.

### **Terms & Conditions**

Although we do our best to provide the service as advertised some factors, such as adverse weather conditions and road closures are outside our control.

All passengers use this service at their own risk and the operators are not liable for damage to persons or belongings.

Passengers must be aware that there is a walk from the drop-off point to the Circuit entry gates. This is an outdoor event and suitable clothing/footwear should be worn.

Tickets for the cross-country shuttle do NOT include entry to Silverstone Circuit.

Service operated by Turweston Flight Centre Ltd, Turweston Aerodrome, NN13 5YD. Tel 01280 705400

**TFC does not offer refunds or exchanges for tickets purchased.**